



**ASPIRE DESIGNS**  
FINE JEWELRY

**Illusion Collection**

**esmé**  
JEWELLERY

## About the Esme Illusion setting

The most expensive diamonds are worth millions and they are extremely rare. The average consumer will never see such precious stones. But we will still seek maximum value for money when shopping for diamond jewellery.


For many a solitaire diamond is the most appealing option but how to find the perfect one? Esme offers an alternative. By setting lots of small diamonds with a specific cut together, the effect of one larger, more expensive solitaire is achieved, without increasing the price tag.

### The Perfect Illusion

Pinpoint accuracy is essential in order to create the ideal Illusion setting, each diamond should fit the stipulated size. Once the craftsmen at Esme have selected the diamonds, they are faced with a technical challenge. Combining different shapes of diamond into one setting also puts designer innovation to the test.

Unlike traditional Illusion setting where stones are placed side by side, Esme's Illusion requires designers to calculate the angle and to minimize height difference between two different shapes. Each of the Marquise diamonds are set in position with less than a 0.01% margin of error for the perfect Illusion setting.



	Total diamond weight in illusion setting(Carat)	Size of the plate( mm )	Equivalent to solitaire setting (Carat)
40002 	0.35 ct	5mm	0.5 ct
40003 	0.5 ct	6.5mm	1 ct
40005 	1 ct	8.4mm	2 ct
40006 	1.25 ct	9.3mm	3 ct

0.50 ct



40002Q



40002S



40002W

1.00 ct



40003Q



40003S



40003W

2.00 ct



40005Q



40005S



40005W

3.00 ct



40008Q



40008S



40008W



40503S



40503W



40505S



40505W



40120R



40120S



40120W

0.80 ct



40400RWD8WN



40229RWD8WN



40404RWD8WN

1.00 ct



40239R



40241R



40058RWD8WN



40230R

0.75 ct



40019RWD8WF

0.80 ct



40011RWD8WN

1.00 ct



40020RWD8WN

1.50 ct



40021RWD8WD

2.00 ct



40115R



41294QWD8WN



41294UWD8WN



41294WWD8WN



41295QWD8WN



41295UWD8WN



41295WWD8WN



41644QWD8WN



41644SWD8WN



41644WWD8WN



41645QWD8WN



41645SWD8WN



41645WWD8WN



41292QPS8RN



41292UPS8RN



41292WPS8RN



41293QPS8RN



41293UPS8RN



41293WPS8RN



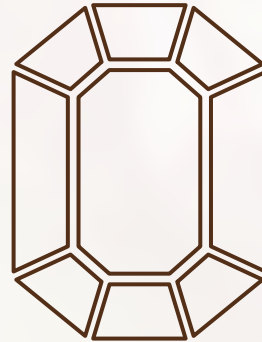
41311UPS8RN



41311WPS8RN

## About the Pie Cut Emerald Setting

9 Piece Emerald is a pie cut made of nine smaller pieces combined and measured with precision to set perfectly aligned to look like single emerald diamond.



It is a cost cutting strategy for buyer to get same look with 80% saving which means higher satisfaction value for consumers.

1.00 ct Emerald Cut	0.40 ct Pie-cut Emerald
	

\*The size of a 0.40 ct pie cut emerald stone is approximately equivalent to a 1.00 ct emerald cut stone.

1.00 ct Ascher Cut	0.40 ct Pie-cut Ascher
	

\*The size of a 0.40 ct pie cut ascher stone is approximately equivalent to a 1.00 ct (6.3 x 6.3mm) ascher cut stone.



AM25726Q1



AM25726U



AM25726W



AM25728Q1



AM25728U1



AM25728W1



AM25791Q



AM25791U



AM25791W



AM25727Q1



AM25727U



AM25727W1



AM25729Q1



AM25729U



AM25729W



AM25786Q



AM25786U



AM25786W



AM25787Q



AM25787U



AM25787W



AM25789Q



AM25789U



AM25789W



AM25790Q



AM25790U



AM25790W



AM25884Q



AM25884U



AM25884W



AM25885Q



AM25885U



AM25885W



AM26015Q



AM26015U



AM26015W



AM26014Q



AM26014U



AM26014W



AM25792Q



AM25792U



AM25792W



AM25793Q



AM25793U



AM25793W



AM25794U



AM25794W



AM26014Q



AM26014U



AM26014W



AM25792Q



AM25792U



AM25792W



AM25793Q



AM25793U



AM25793W



AM25794U



AM25794W



AM25882Q



AM25882U



AM25882W



AM25883Q



AM25883U



AM25883W



AM25780Q



AM25780U



AM25780W



AM25801R



AM25797R



AM25803R



AM25796R



AM25802R



AM25800R



AM25948R



AM25886R



AM25935R-1



AM26012R



AM26013R



AM26011R



AM25967R



AM26008R



AM26009R



AM26007R



AM25915R



AM26018R



AM25916R



AM25953R (2)



AM25953R (3)



AM25953R (7)



AM25953R (2)



AM25953R (5)



AM25953R (6)



AM25953R (4)



AM25954R



AM25954R (3)



AM25954R (2)



AM25954R (4)



AM25954R



AM25805R



AM25819R



AM25804R



AM25815R1



AM25816R 2



AM25806R.jpg



AM25799R



AM25818R



AM25817R



AM25814R.jpg

Luxury Emerald Piecut



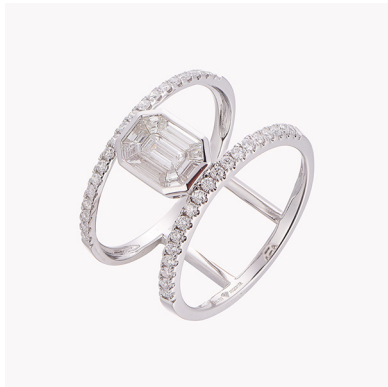
AM25918R



AM25930R



AM25931R



AM25917R



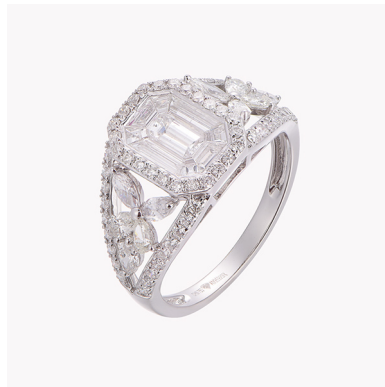
AM25932R



AM25921R



AM25929R



AM25920R



AM25919R



AM25936R



AM25938R



AM25939R



AM25937R



AM25935R



AM25781Q



AM25781U



AM25781W



AM25782Q



AM25782U



AM25782W



AM25860Q



AM25860U



AM25860W



AM25888Q



AM25888U



AM25888W



AM25859Q



AM25859U



AM25859W



AM25889Q



AM25889U



AM25889W



AM25890Q



AM25890U



AM25890W



AM25891Q



AM25891U



AM25891W



AM25887Q



AM25887U



AM25887W



AM25996Q



AM25996W



AM25997Q



AM25997W



AM25976R (2)



AM25976R (3)



AM25976R (4)



AM25976R



AM25977R



AM25977R (2)



AM25977R (4)



AM25977R (5)



AM25977R (3)



AM25975R



AM25974R



AM26006R



AM26004R



AM26005R



AM25922R



AM25968R



AM25926R



AM25969R



AM25934R



AM25928R



AM25923R



AM25927R



AM25925R



AM25924R



AM25940R



AM25941R



AM25942R



AM25944R



AM25943R



AM25970R

**Pie-cut Clover**

0.50 ct



41188Q



41188S



41188W

0.80 ct



41188Q1



41188S1



41188W1

**Pie-cut Star**



41185Q



41185S



41185W



41187Q



41187S



41187W



41186Q



41186S

[www.aspire-group.com](http://www.aspire-group.com)